

DAVID Y. IGE
GOVERNOR



STATE OF HAWAII
DEPARTMENT OF TRANSPORTATION
869 PUNCHBOWL STREET
HONOLULU, HAWAII 96813-5097

JADE T. BUTAY
DIRECTOR

Deputy Directors
LYNN A.S. ARAKI-REGAN
DEREK J. CHOW
ROSS M. HIGASHI
EDWIN H. SNIFFEN

IN REPLY REFER TO:

Board of Land and
Natural Resources
State of Hawai'i
Honolulu, Hawai'i

ISSUANCE OF A REVOCABLE PERMIT FOR AIRCRAFT PARKING
WEST HAWAII WINGERS, INC.
ELLISON ONIZUKA KONA INTERNATIONAL AIRPORT AT KEĀHOLE
TAX MAP KEY: (3) 7-3-43: PORTION OF 003

HAWAII

REQUEST:

Issuance of a Revocable Permit for Aircraft Parking (Parking Permit) to West Hawaii Wingers, Inc. situated at Ellison Onizuka Kona International Airport at Keāhole.

LEGAL REFERENCE:

Section 171-55, Hawai'i Revised Statutes (HRS).

APPLICANT:

West Hawaii Wingers, Inc. (WHW), whose mailing address is 75-5834 Melelina Street, Kailua-Kona, Hawai'i 96740.

LOCATION AND TAX MAP KEY:

Portion of Ellison Onizuka Kona International Airport at Keāhole (KOA), Kailua-Kona, Island of Hawai'i, identified by Tax Map Key: 3rd Division, 7-3-43: Portion of 003.

AREA:

Area/Space No. 423-106, containing an area of approximately 1,394 square feet, as shown and delineated on the attached Exhibit A.

ZONING:

State Land Use District:
County of Hawai'i:

Urban & Conservation
Industrial (MG-1a) and Open

ITEM M-15

BLNR – ISSUANCE OF A REVOCABLE PERMIT FOR AIRCRAFT PARKING
WEST HAWAII WINGERS, INC.

Page 2

LAND TITLE STATUS:

Section 5(a) lands of the Hawai'i Admission Act: Ceded

DHHL 30% entitlement lands pursuant to Hawai'i Admission Act YES___ NO X

CURRENT USE STATUS:

Land presently encumbered by Governor's Executive Order No. 3074, dated August 20, 1981, setting aside 4,204.10 acres designated as KOA under the control and management of the State of Hawai'i, Department of Transportation, Airports Division for Airport Purposes.

CHARACTER OF USE:

Aircraft tie-down (1979 Piper PA-28 Cherokee, N8126M).

COMMENCEMENT DATE:

Upon complete execution of the parking permit.

MONTHLY RENTAL:

\$126.00 (as determined from the Department of Transportation, Airports Division schedule of rates and charges established by appraisal of Airports property statewide).

SECURITY DEPOSIT:

\$378.00, or three (3) times the monthly rental in effect.

DCCA VERIFICATION:

Place of business registration confirmed:	YES <u>X</u>	NO _____
Registered business name confirmed:	YES <u>X</u>	NO _____
Good standing confirmed:	YES <u>X</u>	NO _____

CHAPTER 343, HRS - ENVIRONMENTAL ASSESSMENT:

The State of Hawai'i, Department of Transportation, Airports Division (DOTA), has determined the subject land areas are covered by the Final Environmental Assessment (EA)/Finding of No Significant Impact (FONSI), Airfield, Terminal, and Facility Improvements for the Kona International Airport at Keāhole, published by the Office of Environmental Quality Control (OEQC) in the March 23, 2013, issue of The Environmental Notice. Accordingly, all relevant mitigation from the EA and best management practices will be implemented to address the minimum impacts of this action.

BLNR – ISSUANCE OF A REVOCABLE PERMIT FOR AIRCRAFT PARKING
WEST HAWAII WINGERS, INC.

Page 3

REMARKS:

In accordance with Section 171-55, HRS, relating to Permits, the Department of Transportation proposes to issue a month-to-month Parking Permit to WHW for aircraft parking at KOA.

RECOMMENDATION:

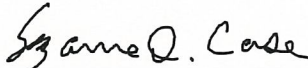
That the Board authorize the Department of Transportation to issue a month-to-month Parking Permit to WHW, subject to: (1) terms and conditions herein outlined, which are by reference incorporated herein; and (2) such additional terms and conditions as may be prescribed by the Director of Transportation to best serve the interests of the State.

Respectfully submitted,

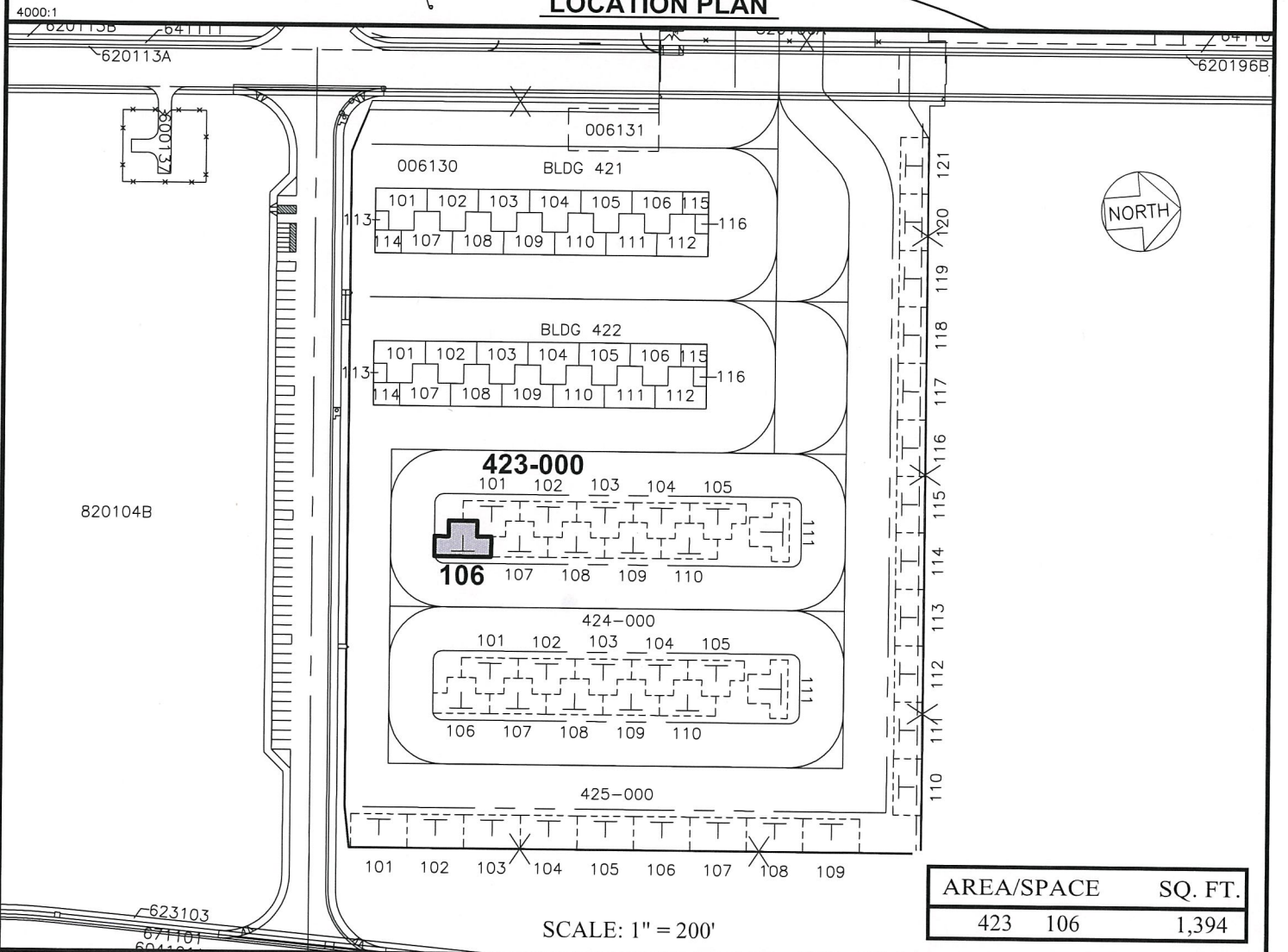
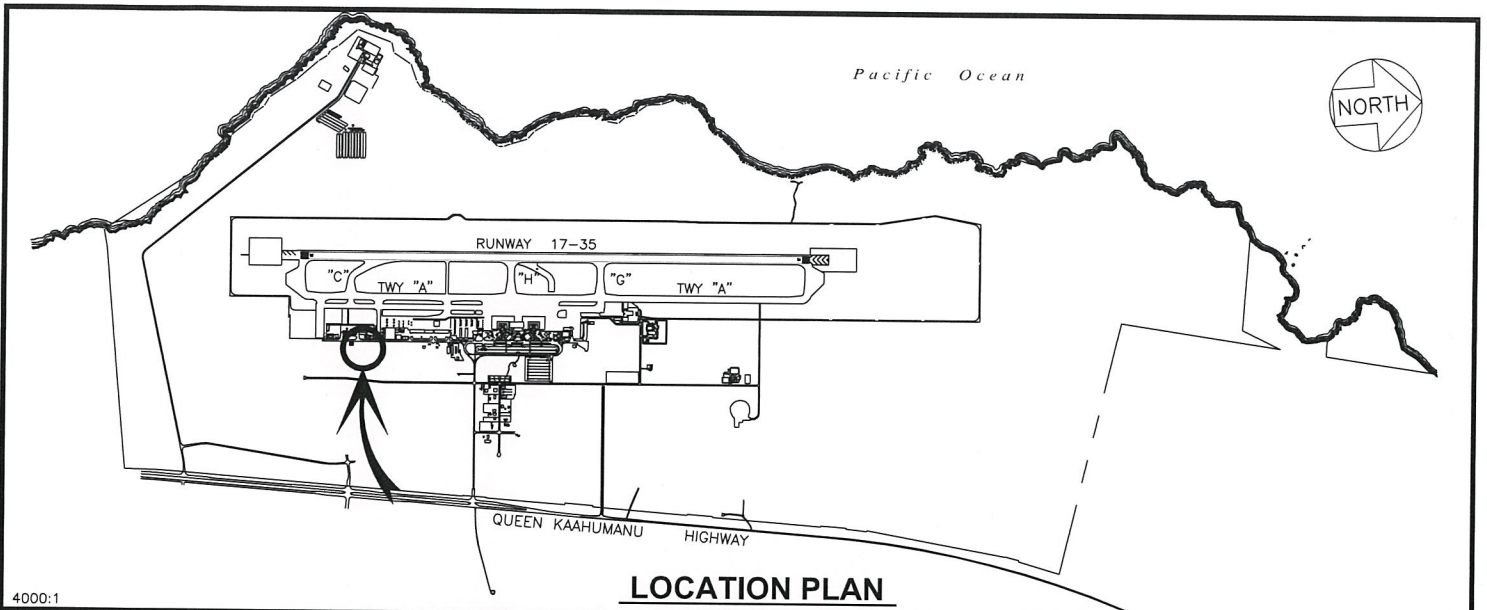


JADE T. BUTAY
Director of Transportation

APPROVED FOR SUBMITTAL:



SUZANNE D. CASE
Chairperson and Member



PP-20-N014

DATE : NOVEMBER 2020

EXHIBIT: **A**



Airports Division

WEST HAWAII
WINGERS, INC.

TIE DOWN
AND T-HANGARS

423106

PLAT 40

ELLISON ONIZUKA KONA INTERNATIONAL AIRPORT AT KEAHOLE

N:\AIRPORTS\KOA_Kona\CAD\PM\koa_423106-01_draft.dwg